

PRODUCT INFORMATION PACKET

Model No: 215TBFW7028
Catalog No: Z115
7 1/2,1750,TEFC,215TZ,1/60/230
Single Phase



Regal and Marathon are trademarks of Regal Beloit Corporation or one of its affiliated companies.
©2018 Regal Beloit Corporation, All Rights Reserved. MC017097E





Nameplate Specifications

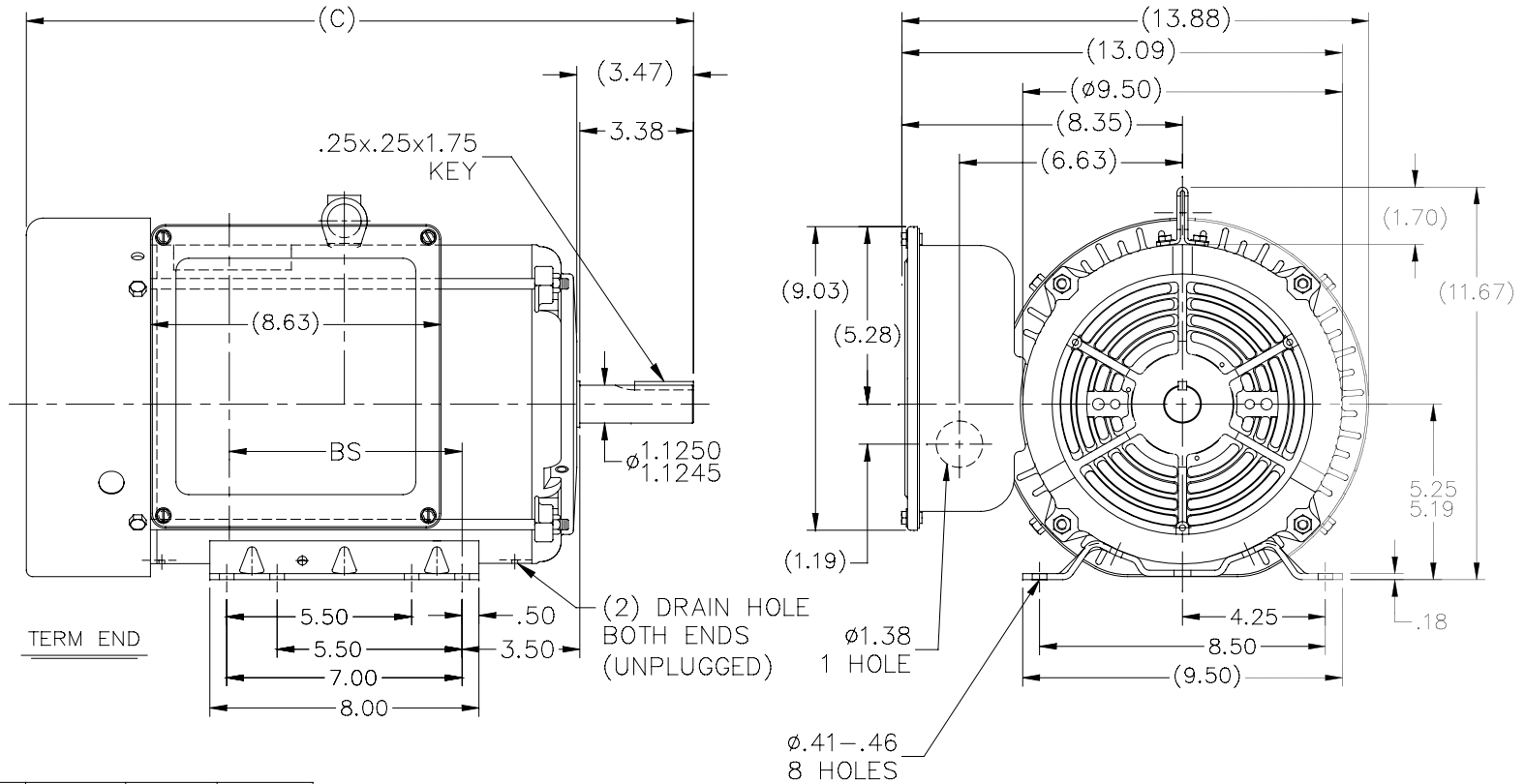
Output HP	7.50 Hp	Output KW	5.6 kW
Frequency	60 Hz	Voltage	230 V
Current	30.5 A	Speed	1750 rpm
Service Factor	1.15	Phase	1
Efficiency	85.5 %	Duty	Continuous
Insulation Class	F	Design Code	L
KVA Code	K	Frame	215TZ
Enclosure	Totally Enclosed Fan Cooled	Overload Protector	Manual
Ambient Temperature	40 °C	Drive End Bearing Size	6307
Opp Drive End Bearing Size	6206	UL	Recognized (Not Protector)
CSA	Y	CE	Y
IP Code	43		

Technical Specifications

Electrical Type	Capacitor Start Capacitor Run	Starting Method	Across The Line
Poles	4	Rotation	Selective Counterclockwise
Mounting	Rigid base	Motor Orientation	Horizontal
Drive End Bearing	Ball	Opp Drive End Bearing	Ball
Frame Material	Rolled Steel	Shaft Type	Single Special Extension
Overall Length	21.09 in	Frame Length	12.40 in
Shaft Diameter	1.125 in	Shaft Extension	3.5 in
Assembly/Box Mounting	F1 Only		
Outline Drawing	A-SS86671-1240	Connection Diagram	A-EE9048RC

This is an uncontrolled document once printed or downloaded and is subject to change without notice. Date Created: 06/29/2018

SS86671



DASH	FRAME	C	BS
965	213T	18.34	5.42
1115	213/15T	19.84	6.92
1240	215T	21.09	8.17

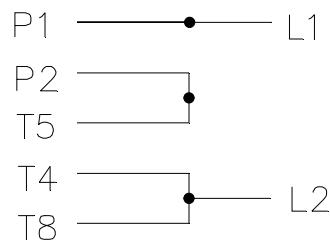
NOTES:

1. NAMEPLATE TO BE READ FROM C'BOX SIDE OF MOTOR.
2. DASH 965 TO BE READ FROM OPPOSITE SHAFT END.

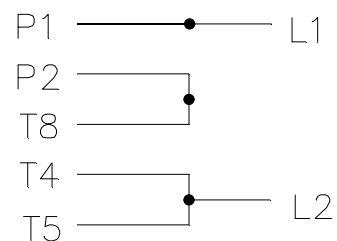
		TOLERANCES UNLESS SPECIFIED		REGAL TM Regal Beloit America, Inc.		DRAWN MH 04-17-1997					
		DEC.	INCHES			CHK	ML 04-18-1997				
		.X	$\pm .1$			APPD	DN 04-18-1997				
		.XX	$\pm .03$	TITLE OUTLINE - STEEL C' BOX		SCALE	7=32				
8	DRAIN HOLES ADDED	KIR	02/08/16	SS	.XXX	$\pm .005$	REF				
7	REVISED 'B' DIMENSION	RJW	01-22-2008	ML	.XXXX	$\pm .0005$	FMF				
NO.	REVISION	BY & DATE	CHK	ANG	$\pm 7'30''$	FINISH	PREV				
THIS DRAWING IN DESIGN AND DETAIL IS OUR PROPERTY AND MUST NOT BE USED EXCEPT IN CONNECTION WITH OUR WORK ALL RIGHTS OF DESIGN AND INVENTION ARE RESERVED THIS IS AN ELECTRONICALLY GENERATED DOCUMENT - DO NOT SCALE THIS PRINT				RFP	CAD FILE	ss86671	SIZE	DRAWING NO.	PAGE	OF	REV.
				DIST	LB		A	SS86671			8

CONNECT:
START CAPACITORS IN PARALLEL

C.W. ROTATION

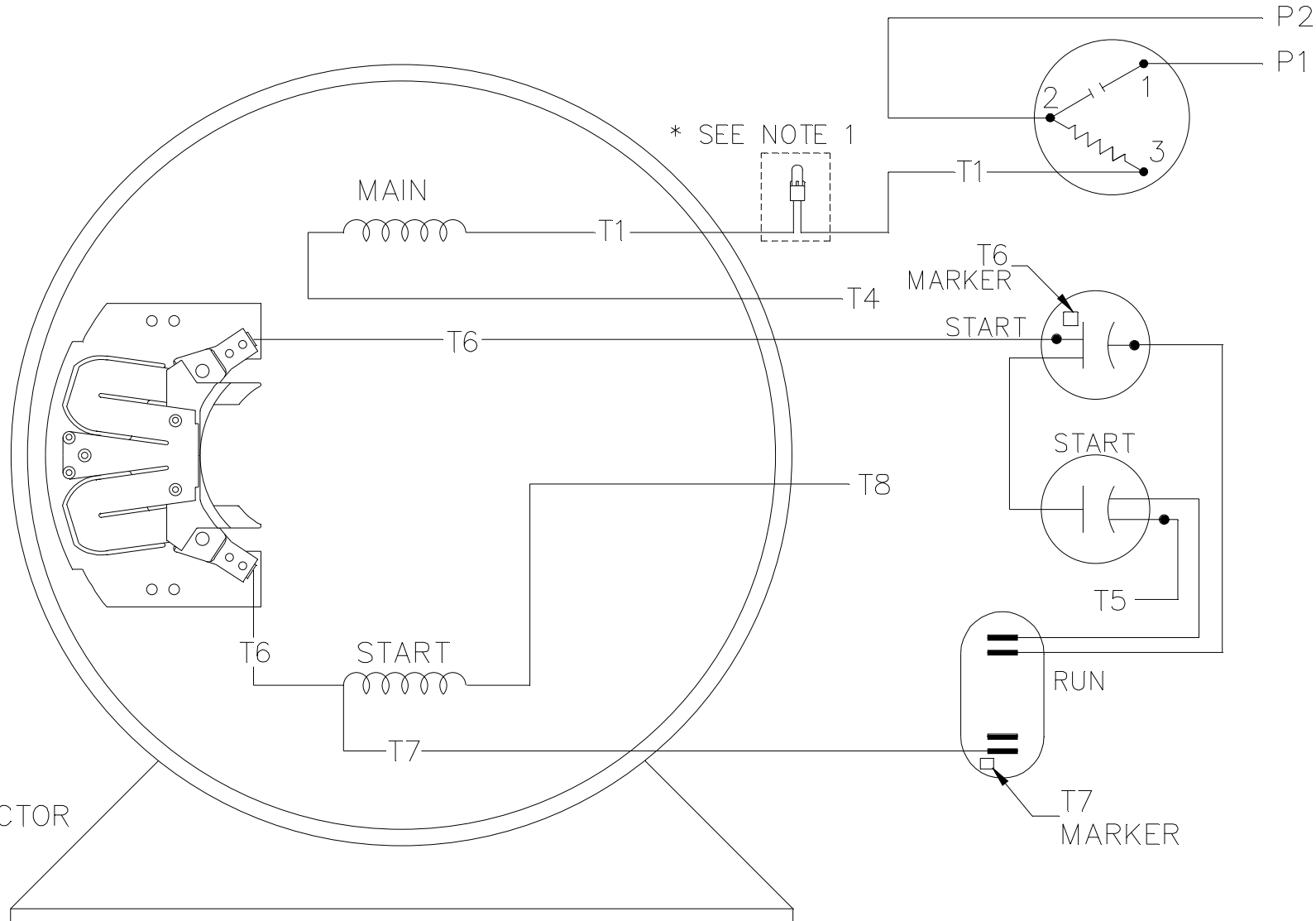


C.C.W. ROTATION



SINGLE VOLTAGE
CAPACITOR START
CAPACITOR RUN
REVERSIBLE

NOTE:
1. USE PRESSURE CONNECTOR
ONLY IN MT2 PLANT



VIEW OF TERMINAL END

NO.	REVISION	BY & DATE	CHK	TOLERANCES UNLESS SPECIFIED		MARATHON ELECTRIC	DRAWN MK 08-13-2007						
				DEC.	INCHES		CHK	MB 08-15-2007	APPD	MB 08-15-2007			
				.X	±.1	TITLE CONNECTION DIAGRAM MAT'L. 180-210 SWITCH FINISH	SCALE	1=1					
3	ADDED PRESSURE CONNECTOR IN MT2 MODEL	NB 10/5/2011	AK	.XX	±.02		REF	213M1029CD					
2	CORRECT THE CONNECTIONS PER 08-1578	RWR 04-29-2008	ML	.XXX	±.005		FMF	213M1029					
1	MOVED T5 LEAD 08-1578	RJW 04-15-2008	ML	.XXXX	±.0005		PREV						
				ANG	±7'30"								
THIS DRAWING IN DESIGN AND DETAIL IS OUR PROPERTY AND MUST NOT BE USED EXCEPT IN CONNECTION WITH OUR WORK ALL RIGHTS OF DESIGN AND INVENTION ARE RESERVED THIS IS AN ELECTRONICALLY GENERATED DOCUMENT - DO NOT SCALE THIS PRINT				RFP	08-15-2007	CAD FILE	EE9048RC		SIZE	DRAWING NO.	PAGE	OF	REV.
				DIST				A	EE9048RC			3	

